

Extron Quick Start Guide to Room Agent Software



Extron Electronics
INTERFACING, SWITCHING AND CONTROL

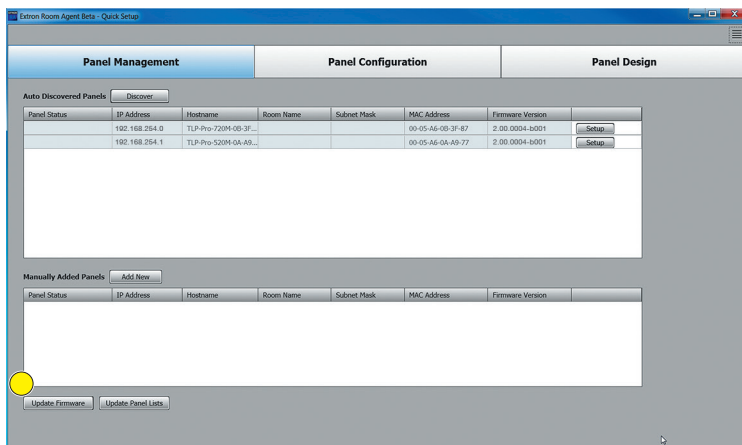
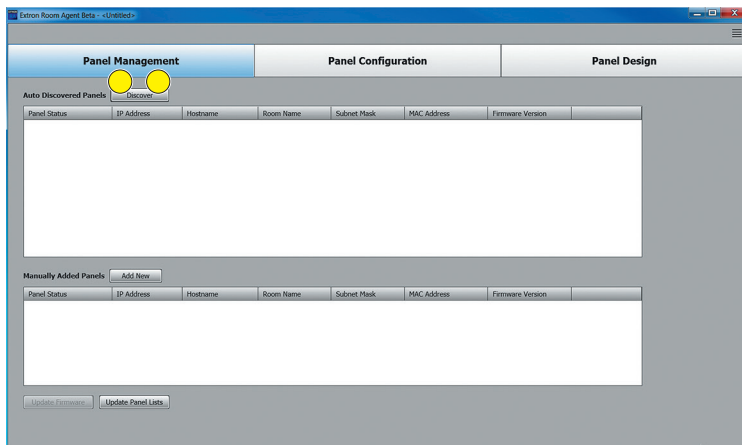
Copyright

© 2016 Extron Electronics. All rights reserved.

Trademarks

All trademarks mentioned in this guide are the properties of their respective owners.

Quick Start Guide



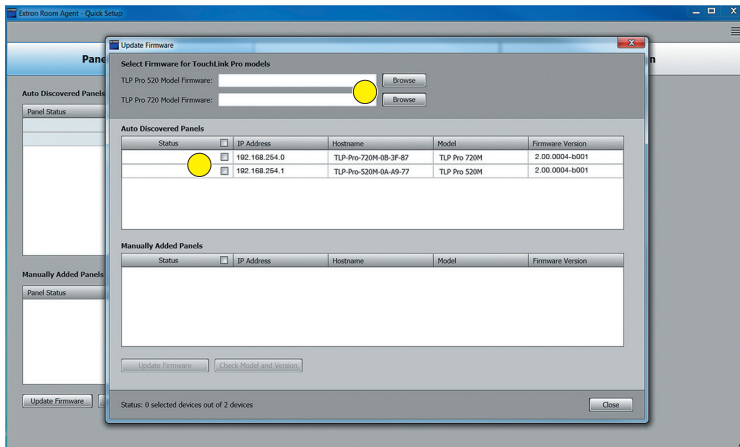
Start the program.

The program will open with the Panel Management view displayed. If the program doesn't open to this view, click on the Panel Management tab at the top.

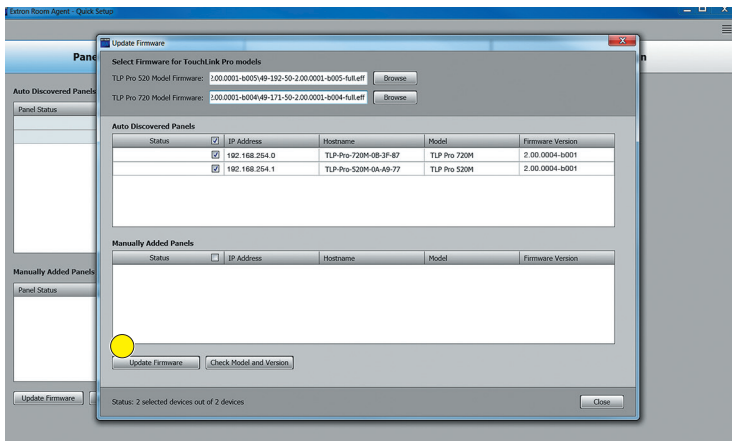
1. Click on the Discover button. Panels located on the same subnet will be automatically discovered and displayed.
2. When all of the panels are displayed, click on the Stop Discovery button to end the search.

Note: Any panels not on the same subnet will have to be added manually to the list using the Manually Add Panels section of the Panel Management tab.

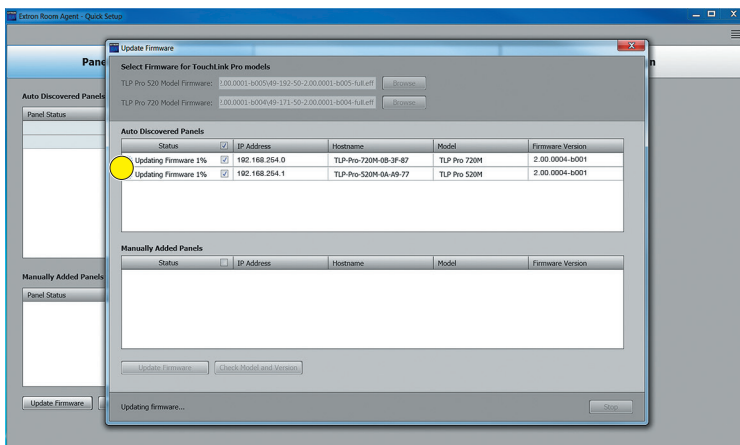
Click on Update Firmware button to update firmware for panels.



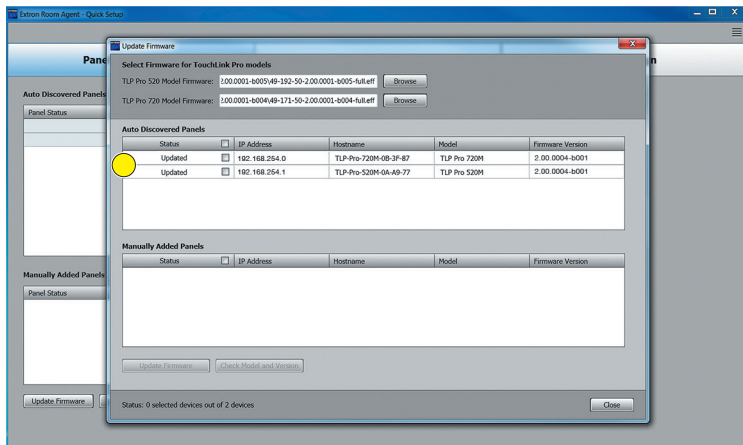
1. Click on Browse button to select firmware for the panel model.
2. Select the panel to be updated with firmware.



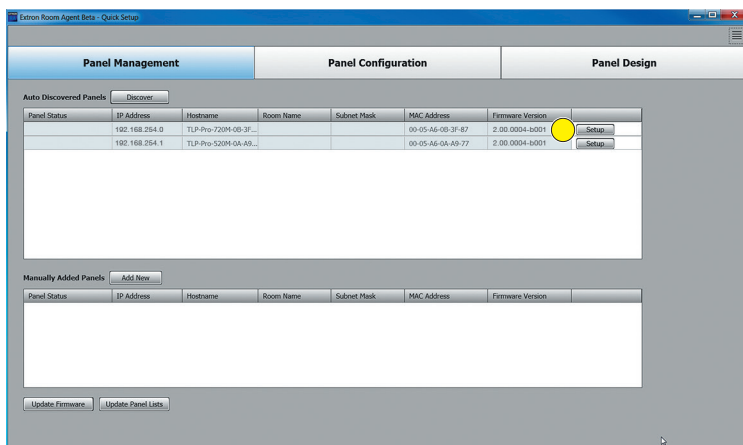
When firmware has been selected for a panel model and checkbox has been selected, the Update Firmware button becomes enabled.



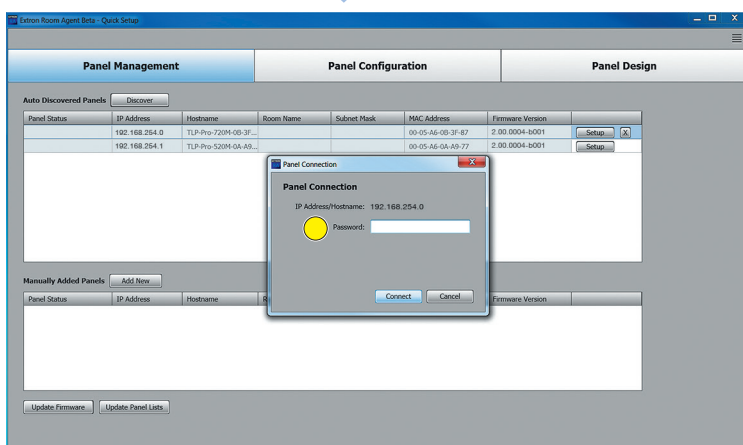
The Update Firmware Status indicates that the updating firmware is in process.



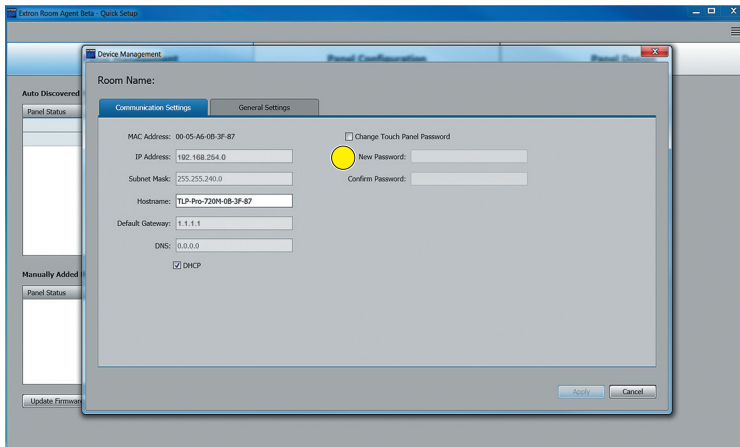
When Update Firmware Status changes to Updated, it indicates that the firmware has been successfully updated on the panel. Click on the Close button to finish.



Each panel requires setup. Click on the first panel's Setup button which will connect to the device.



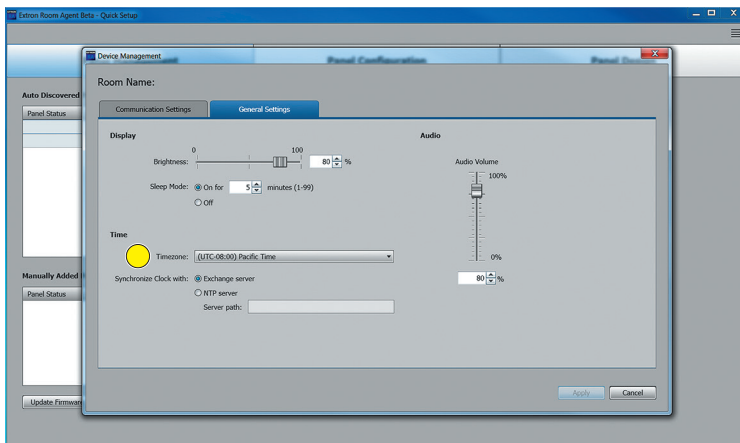
The Panel Connection dialog box is displayed. The default password on panels shipped from Extron is "extron" - case-sensitive.



The Communication Settings tab is displayed under the Device Management Window. Confirm that the panel is correctly configured. It is highly-recommended that you change the password for the panel.

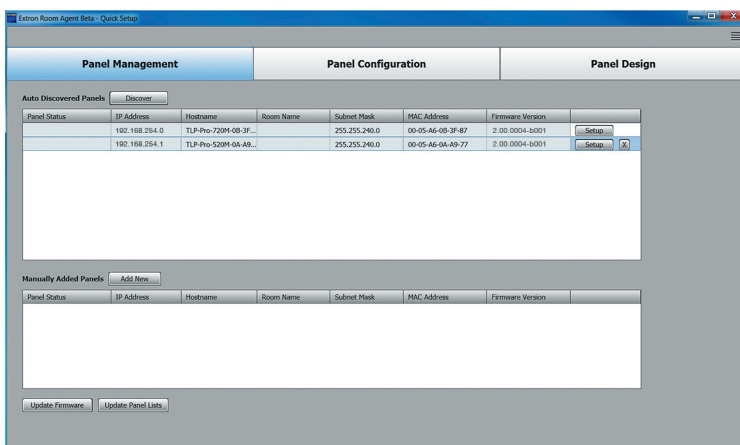
Note: If panels are going to be configured with a static IP address and you are going to be using a host name for the exchange server, make sure you provide the DNS server address.

Add default Gateway and DNS Server information.

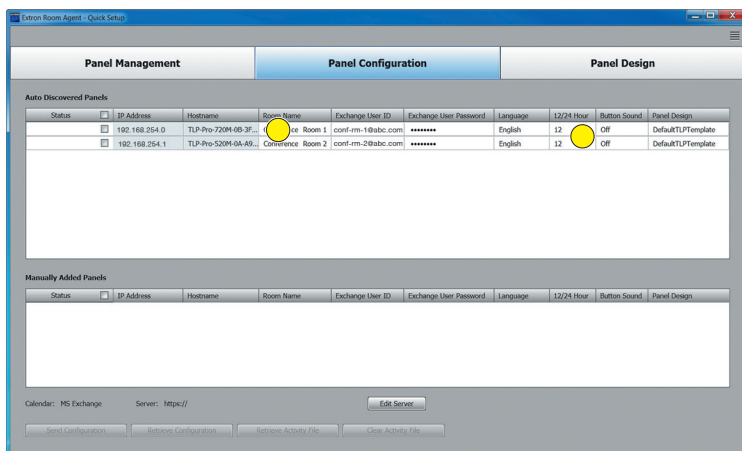


The General Setting tab allows the panel hardware settings, including brightness, sleep mode, and audio levels, to be changed. The timezone and clock synchronization can also be set within this tab.

Note: Panels support time synchronization using either NTP or via Microsoft Exchange.

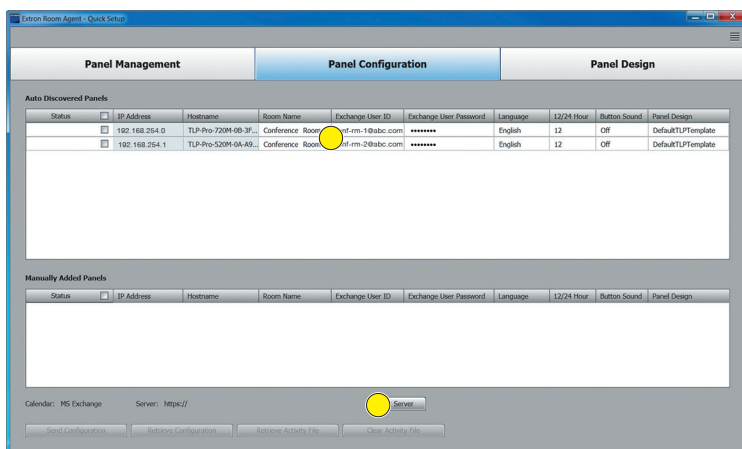


Once all the panels are set up, the information will be populated, as shown.



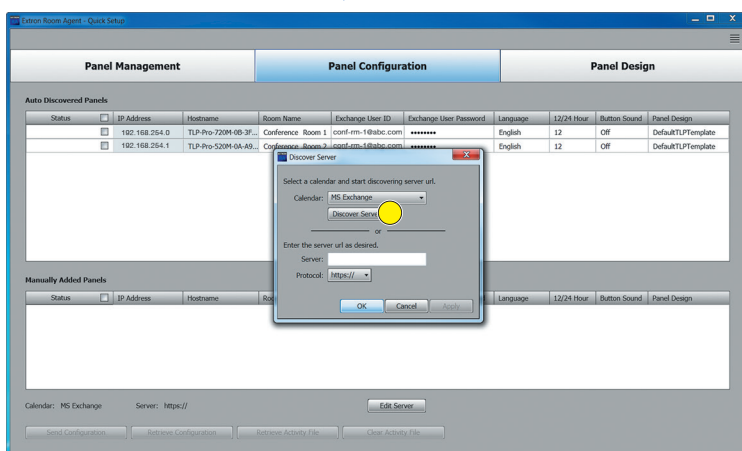
Click on the Panel Configuration tab. Each panel IP Address and Hostname are shown. The Language, Clock Format, Button Sound and Panel Design are set to default values that can be changed.

Note: The "DefaultTLPTemplate" is the default Panel Design provided as part of the Room Agent installation process. To view this layout, go to the Panel Design tab.

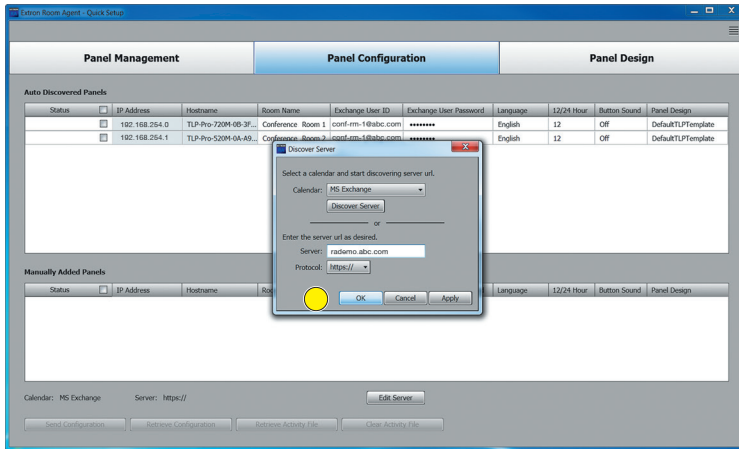


The Room Name, Exchange User ID, and Exchange User Password fields are editable by clicking on them. The other fields are pulldowns accessed by clicking on them.

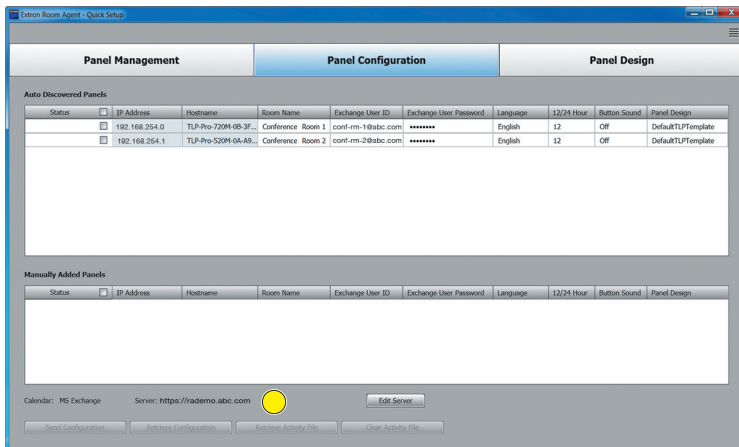
1. Enter the name of the room in the Room Name field and Exchange credentials for each touchpanel. The Exchange User ID requires the User Principal Name - UPN for the room resource user ID. Note: The UPN must have an SMTP email address assigned to it.
2. Click on the Edit Server button.



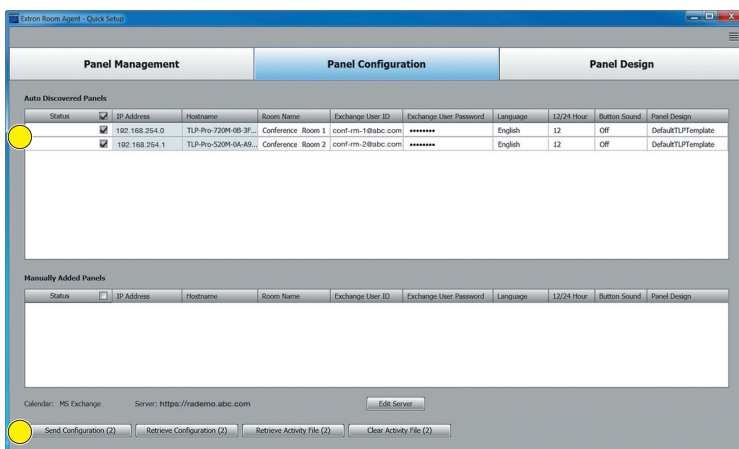
At the Discover Server window, click on the Discover Server button to auto discover the server for the calendar.



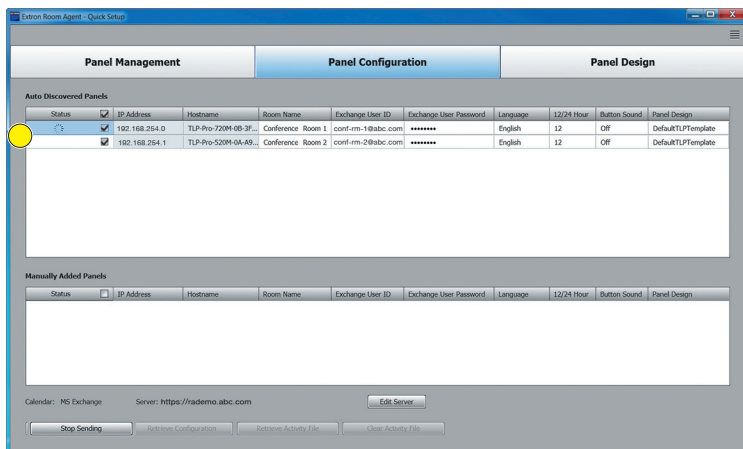
The server URL has been discovered. Click on OK or Apply button to set the URL as the server.



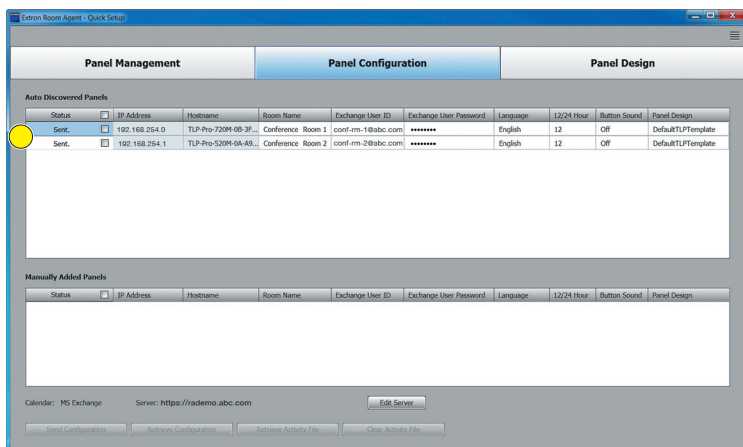
Note: The server URL has been applied.



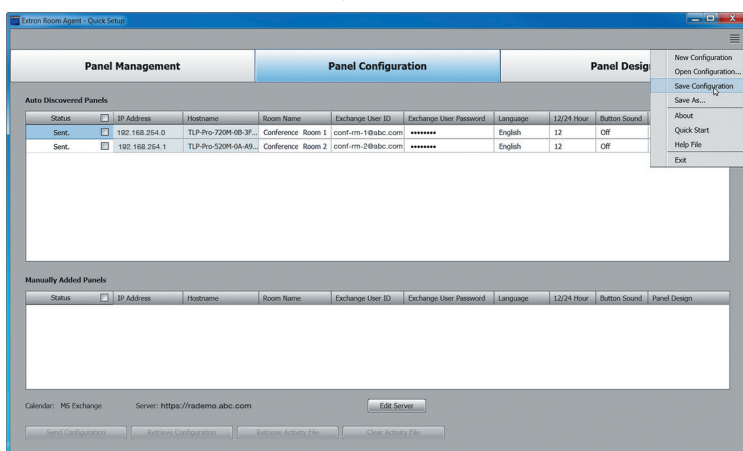
When all the required entries for a touchpanel have been completed and the checkbox has been selected, the Send Configuration button becomes enabled. Click on the Send Configuration button for the configuration upload to begin.



The Configuration Status indicates that the upload is in process.



When Configuration Status changes to Sent, it indicates the panels have been successfully configured.



Save your configuration before exiting.

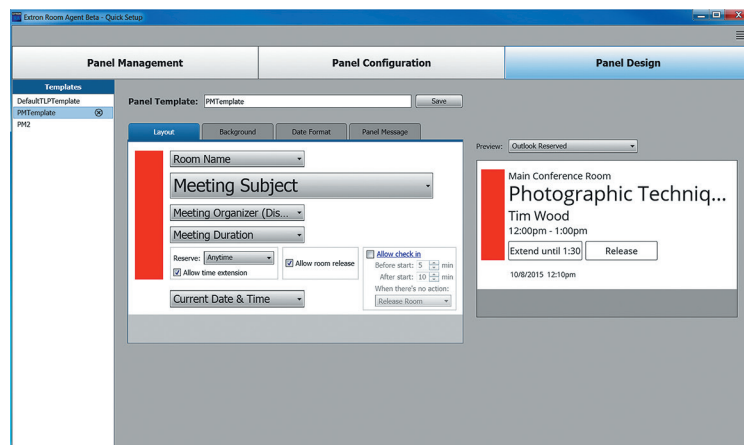
You have successfully setup an Extron Room Scheduling System.
Please contact an Extron Representative with any questions.

Room Agent User Interface Design

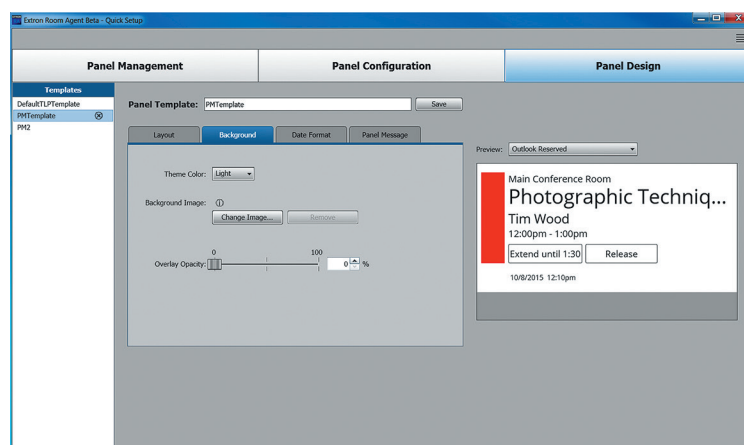
The Panel User Interface customizable options include: the placement of the Exchange fields on the display, reserving the room, releasing the room, extending the meeting time, color theme (dark or light), the background image and it's opacity, the date and time format, and the Panel Message.

The Panel Design tab allows for the customization of the panel user interface by creating templates.

The examples here illustrate the four different tabs shown in the Panel Design section.



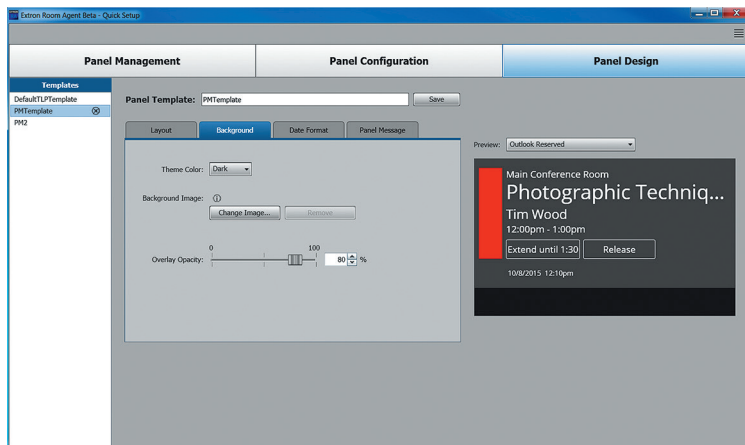
The layout tab allows the panel layout to be modified. On the left hand side of the view is an interactive mock-up showing the size and location of the panel's five lines. Each of these has a pulldown listing the different meeting fields, e.g. Meeting Subject, Meeting Organizer, etc. On the right hand side of the view is the preview of how the selections will appear on the panel. There are six different screen looks possible.



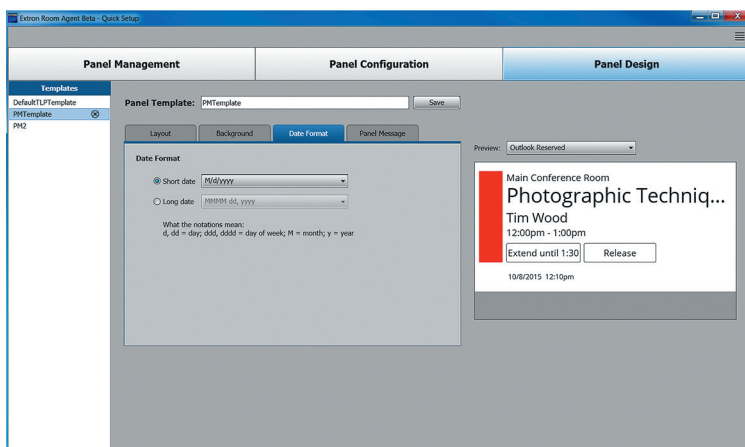
Choosing theme, background image, and overlay opacity.

Further examples of the options for customizing the user interface.

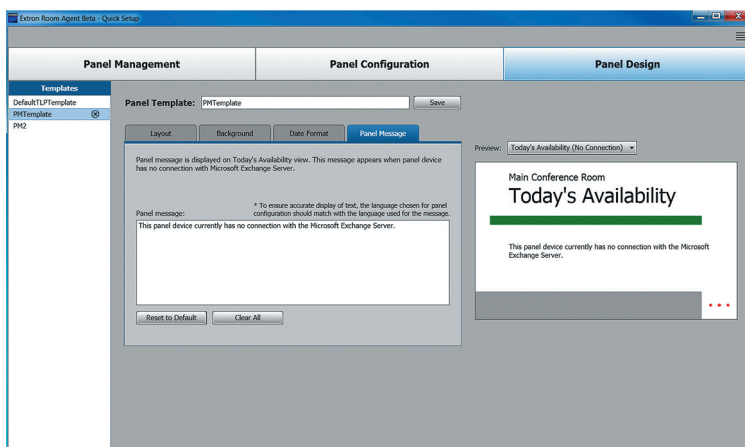
This shows the Light Theme.



Further examples....



Choosing date format.



Customize panel message as needed.

Notes

